



St Hardulph's C of E Primary School

School Newsletter

2022/23

Monday 28th
November

2022

Warwick	94
Hastings	82
Newark	110
Edinburgh	94

Headteacher's Treat

Class 1: William W.

Class 2: Vivienne

Class 3: Tilly

Headteacher's Awards

This week have been awarded to:

Gold Star

Vivienne

Attendance

Our whole school attendance target this year is 96.5%.

	<u>% attendance this year</u>
Class 1	98.1%
Class 2	97.5%
Class 3	97.1%
Total	97.5%

Number of minutes lost this week due to children arriving late: 50

*May Christ dwell in your hearts
through faith, as you are being rooted
and grounded in love. Ephesians 3:17*

St Hardulph's Church of England Primary School

Main Street, Breedon on the Hill, Derby, DE73 8AN

Tel: 01332 862572

Email: office@st-hardulphs.leics.sch.uk

Website: www.st-hardulphs.leics.sch.uk

Twitter: @StHardulphs

Headteacher – Mrs Kelly Ellis

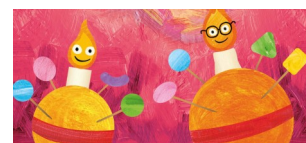
I would like to offer my thanks to parents for sharing their views with the inspection team on Thursday in the questionnaire and in person, it was much appreciated. The children who shared their work and their views spoke with confidence and were a credit to our school. Whilst we know the outcome of the inspection, this is not able to be shared until the final report is published which is likely to be after the Christmas break.

Yesterday we sent home two tickets for each child for each performance of the whole school performance 'It's a Miracle' on Monday 12th December and Wednesday 14th December. Both performances are the same and families can decide how to share their tickets between family members. Parents are welcome to swap tickets amongst themselves and if you have any spare they can be handed into the office and available to anyone wanting extra tickets.

Mrs Ellis

Christingle

We are making Christingles in school on Thursday 1st December in preparation for the Christingle Service in Church on Friday 2nd December. Parents and families are welcome to join us for the service



Please can we ask that you send your child into school with an orange and some small soft sweets to add as decoration by the Thursday morning (1st Dec). School will be providing the candle, ribbon, sticks and oranges as usual

Christingle cardboard money boxes have been given to children this week to collect any donations for the Children's Society. All donations to be returned to school by Monday 5th December please. You can also donate online at <https://www.childrenssociety.org.uk/christingle/st-hardulphs-ce-primary-school>

Christmas Fair

The Christingle service replaces our usual afternoon celebration worship, which is not taking place due to the PTFA Christmas Fair, which starts at 3:00pm. You may collect your child from 3pm to visit the Christmas Fair. If your child would like to help run a stall at the Christmas Fair, please email the office so that we can collate a list of those willing to help.

TT RockStars - England Rocks

Well done to Class 2 for being placed 18,307th and Class 3 for being placed 21744th out of nearly 35,000 classes who took part in England rocks last week. Special mention to the following children for their contributions: Betty, Vivienne, Henry, Kobee, Francis, Joshua and Evie. Certificates have been shared in worship.



Christmas Performances

**Monday 12th December and
Wednesday 14th December**

This year the children will be performing 'It's a Miracle!' as a whole school this year and will be performing on the above dates to families. Each child will be issued with 2 tickets for family members for each performance (2 on Monday and 2 on Wednesday). We are issuing tickets this year to ensure we are compliant with fire regulations in the hall as it is a whole school event. If any families wish to swap tickets around this can be done amongst yourselves as parents. **Tickets will be sent home today, Monday 28th November.**

St Hardulph's Family Carol Service

Thursday 15th December 5:30-6:30pm

In addition to our school performances, the children will be performing a range of carols and festive songs in church for families on Thursday 15th December at 5:30pm. It is our expectation that all children attend and ask that they are in Church by 5:20pm on this date in full school uniform. Refreshments and Mince pies will be served.

Christmas Lunch

Christmas lunch orders were due by today. If your child wants a school Christmas Lunch, please make sure that it is ordered over this weekend, if you have not already done so.

PTFA C

hristmas Fundraising

I would like to thank you all for your support for the PTFA disco, which due to a generous offer by Breedon Aggregates to meet the PTFA's expenses, meant we raised £252 for the school.

The **Christmas Fair** will take place on **Friday the 2nd of December from 3pm**. If there are

any bakers out there who would be able to bake a cake, cupcakes or mince pies to go on the refreshments stall, if you could let me know on the email address above, all donations will be greatly received.

Furthermore, if anyone has any unwanted (as good as new) gifts they wish to donate for the tombola, please could these be handed into the school office. We are also still looking for volunteers to help out on stall's from 3pm, if anyone is able to help if you can get in touch with me please.

Santa will be visiting our Christmas Fair again this year. If your child (younger siblings are welcome too) wishes to see Santa at the Christmas Fair then please send £3 per child into school with your child's name on it, or BACS the money to the PTFA account (30-90-89 56855468) making it clear who your child is. A list of these children will then be generated for the day and 5-minute slots allocated.

Finally, on **Friday the 16th December** after school's worship the raffle will be drawn, all parents are welcome to attend. Tickets for the raffle can be purchased at the Christmas fair, in the Pinnacle Store from December and at both Christmas performances.

Christmas Jumper Day—9th December

We would like as many children as possible to wear their Christmas jumpers on Friday 9th December in return for a donation to Save the Children's Christmas fundraising campaign.

Here is our school's link to the Save The Children Fund page for your donations for Christmas Jumper Day <https://christmas.savethechildren.org.uk/fundraising/kelly-ellis-christmas-jumper-day2022>



Family Lunches

The following family lunches are available for Parents/Grandparents/other adult family members to attend next term. A **maximum of 2** adult family members can attend **per child**. The cost of an adult lunch is £3.18 each, to be paid in advance via your child's ParentPay account.

The deadline for orders/payments for the January sessions is **Monday 12 December**.

The deadline for the lunches for the second half term is **Monday 6 February**.

Please note that we are not able to take any orders after these dates due to the kitchen's ordering cycle.

Monday	9 January	Meatballs	Class 1
Wednesday	18 January	Roast Pork	Class 2
Tuesday	24 January	Sausages & Mash	Class 3
Half Term Break			
Tuesday	28 February	Cottage Pie	Class 3
Wednesday	8 March	Roast Chicken	Class 1
Tuesday	14 March	Turkey Lasagne	Class 2

Jam Jar request

In preparation for creating some wonderful lanterns to be part of the Breedon Lantern Trail on Sunday 18th December, please can we ask for donations of Jam Jars (clean, washed out and labels removed) to be sent into school by the end of November. We need around 100 (hence the early request) so as you finish your Jam / marmalade at home please send them into school to be stored ready to be decorated by the children

Panto

A reminder that our Panto trip to Derby Arena is on 13th December. Children are expected to arrive back at school at approximately 4:45pm ready for collection. School meals will be available as usual.



Diary Dates

<u>2022</u>	Who	What
30 Nov		Open Day
2 Dec	All	Christingle in church 9:15 (families welcome)
2 Dec	All	PTFA Christmas Fair (No celebration worship)
9 Dec	All	Christmas Jumper Day
9 Dec	All	Christmas Lunch
12 Dec	All	Whole School Christmas performance 2:00pm
13 Dec	All	Panto return approx. 4:45pm
14 Dec	All	Whole School Christmas performance 2:00pm
15 Dec	All	Family Carol Service 5:30pm
19 Dec	All	Last day in school before Christmas break
3 Jan	All	INSET Day for staff (School closed to children)
4 Jan	All	School opens for Spring Term
20 – 24 Feb	All	Half term break
27 Feb	All	INSET Day for staff (School closed to children)
31 Mar	All	School closes for Easter break
17 Apr	All	School opens for Summer Term
1 May	All	May Day bank holiday
29 May – 2 Jun	All	Half term break
14 Jul	All	School closes for Summer Break

